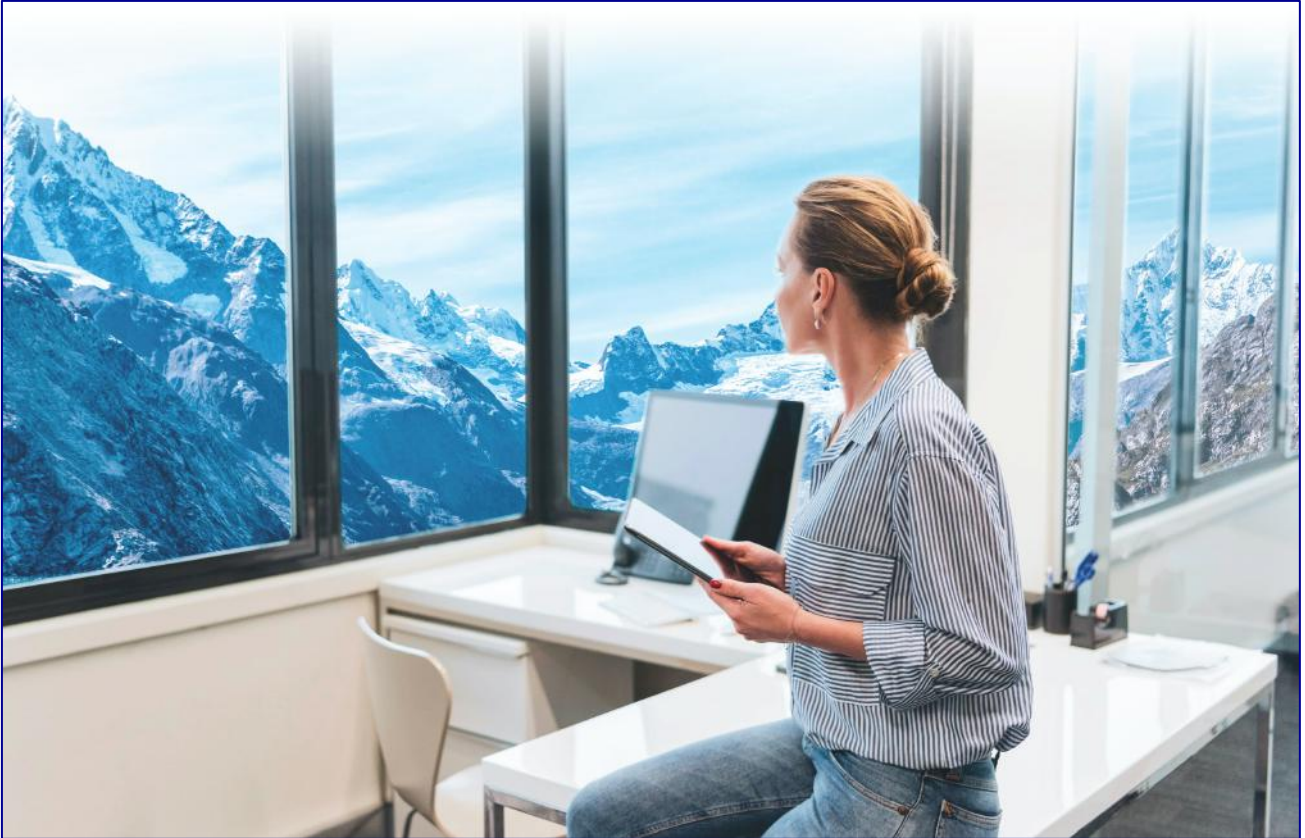


ProMED<sup>USA</sup>  
products that REALLY work.

+ AtmosAirAsia<sup>TM</sup>  
SOLUTIONS  
Breathing is Believing<sup>SM</sup>



# AtmosAware Real Time WiFi Enabled IAQ Monitoring System

# AtmosAware Remote WiFi Enabled Remote IAQ Sensor



AtmosAware Sensor

The AtmosAware System makes it simple to monitor your indoor air IAQ in real time on your mobile phone, tablet or laptop. It is WiFi enabled and backed up by cloud storage.

The AtmosAware System includes sensors, a web platform (subscription based) and a mobile app that enables you to check CO<sub>2</sub>, PM<sub>2.5</sub>, PM<sub>10</sub>, Total Volatile Organic Compounds (TVOC Levels), Temperature and Humidity on your mobile device of choice.

You can easily analyze the data on a daily, weekly or monthly basis and also view historical levels for comparison making report generation simple.

Exclusively distributed by



# Enhanced Smart Multi-Sensor Monitor MSD-1608 Commercial Grade B

## Take full control of your indoor air quality with cloud monitor

MSD-1608 is an enhanced multi-sensor cloud monitor designed to provide full visibility of your indoor environment thanks to high precision sensors measuring PM2.5, PM10, CO<sub>2</sub>, TVOCs, temperature and humidity.

### • Connected smart monitor

MSD-1608 can be connected to Internet through WiFi, Ethernet or Mobile data.

### • No data loss

AtmosAir is contracted with \*GAMS Environmental Monitoring Ltd. and utilize the GAMS unique data buffer technology, the monitor is resilient to network disconnection regardless network type up to 3 months. All historical data gets synchronized automatically once the monitor is back online.

• **Certified Commercial Grade B Monitor** MSD-1608 is an accredited Grade B air quality monitor by RESET™- Building Standard specialized in Indoor Air Quality.

GAMS is a cloud monitoring platform as a service provides business insights through real time indoor air quality monitoring

## The most agile and powerful environmental monitoring platform

The AtmosAir cloud monitoring platform offers real time IAQ visualization and data analysis across your laptop, tablet, or mobile phone, anytime and anywhere.

The platform is built to offer seamless responsiveness to your building management, you will receive weekly IAQ report as well as actionable notification alert when there is an adverse change to your environment.

IAQ data is meant to be further served to optimize operational excellence of your HVAC and Filtration System. Our Building Automation integrates IAQ forecasting powered by machine learning makes the control even smarter.



## Monitor Specifications



### PM 2.5

Sensor type: Pinpoint laser optics  
Measuring range: 0 to 1000 µg/m<sup>3</sup>  
Resolution: 0.1 µg/m<sup>3</sup>  
Accuracy: +/- 10%  
Lower boundary: 0.3 µm Sensor:  
Proprietary design

### TVOCs

Sensor type: High precision digital sensor  
Measuring range: 0 to 2.0mg/m<sup>3</sup>  
Resolution: 0.001 mg/m<sup>3</sup>  
Accuracy: +/- .01mg + 10% of reading  
Sensor: Applied Sensor iAQ-core

### Temperature

Sensor type: High precision digital sensor  
Measuring range: 0 to 50 °C Resolution:  
0.01 °C  
Accuracy: < +/- 0.5° C @25° C Sensor:  
SHT30 / SHT20

### PM 10.0

Sensor type: Pinpoint laser optics  
Measuring range: 0 to 1000 µg/m<sup>3</sup>  
Resolution: 0.1 µg/m<sup>3</sup>  
Lower boundary: 0.3 µm  
Sensor: Proprietary design

### CO<sub>2</sub>

Sensor type: NDIR  
Measuring range: 0 to 5,000ppm  
Resolution: 1ppm  
Accuracy: +/- 40ppm +3% of reading  
Sensor: GE, Senseair S8, Telaire Tlaire T6713

### Humidity

Sensor type: High precision digital sensor  
Measuring range: 0 to 100% RH Resolution:  
0.001 mg/m<sup>3</sup>  
Accuracy: < +/- 3.0% RH (20% – 80%RH)  
Sensor: Sensirion SHT30 / SHT20

### Connectivity & Electrical

Connectivity: WiFi (2.4GHz) / Ethernet  
Size: L 12.8 cm x W 12.8 cm x D 4 cm  
Power: AC100-240V, 50/60Hz  
Net weight: 384g  
Internet traffic: 1.2MB/day/monitor  
Calibration: Annual

Exclusively distributed by:



# ING Bank Weekly Report

2019/07/08 – 2019/07/14

## Shanghai Office floor 19

Shanghai WFC (L19)

PM2.5	<b>3.9 <math>\mu\text{g}/\text{m}^3</math></b> Indoor avg.	<b>Very Good</b> Level	<b>29.1 <math>\mu\text{g}/\text{m}^3</math></b> Outdoor avg.	<b>86.6 %</b> Reduction
PM10	<b>2.9 <math>\mu\text{g}/\text{m}^3</math></b> Indoor avg.	<b>Very Good</b> Level	<b>26.7 <math>\mu\text{g}/\text{m}^3</math></b> Outdoor avg.	<b>89.0 %</b> Reduction
TVOC	<b>0.14 <math>\text{mg}/\text{m}^3</math></b> Indoor avg.	<b>Very Good</b> Level		
CO2	<b>716 ppm</b> Indoor avg.			

The outdoor station used as reference for this node is Pudong new district (Pudong New District).

Data coverage is 99%. We have received 3145 out of 3150 data points possible.

### Guidelines

	PM2.5	PM10	TVOC
<b>Very good</b>	< 15 $\mu\text{g}/\text{m}^3$	< 55 $\mu\text{g}/\text{m}^3$	< 0.30 $\text{mg}/\text{m}^3$
<b>Good</b>	< 35 $\mu\text{g}/\text{m}^3$	< 155 $\mu\text{g}/\text{m}^3$	< 0.50 $\text{mg}/\text{m}^3$
<b>Acceptable</b>	< 55 $\mu\text{g}/\text{m}^3$	< 255 $\mu\text{g}/\text{m}^3$	< 0.80 $\text{mg}/\text{m}^3$
<b>Poor</b>	< 80 $\mu\text{g}/\text{m}^3$	< 355 $\mu\text{g}/\text{m}^3$	< 1.20 $\text{mg}/\text{m}^3$
<b>Extremely poor</b>	> 80 $\mu\text{g}/\text{m}^3$	> 355 $\mu\text{g}/\text{m}^3$	> 1.20 $\text{mg}/\text{m}^3$

Breakpoints are daily averages during operation hours.

Your operation hours are defined as the following:

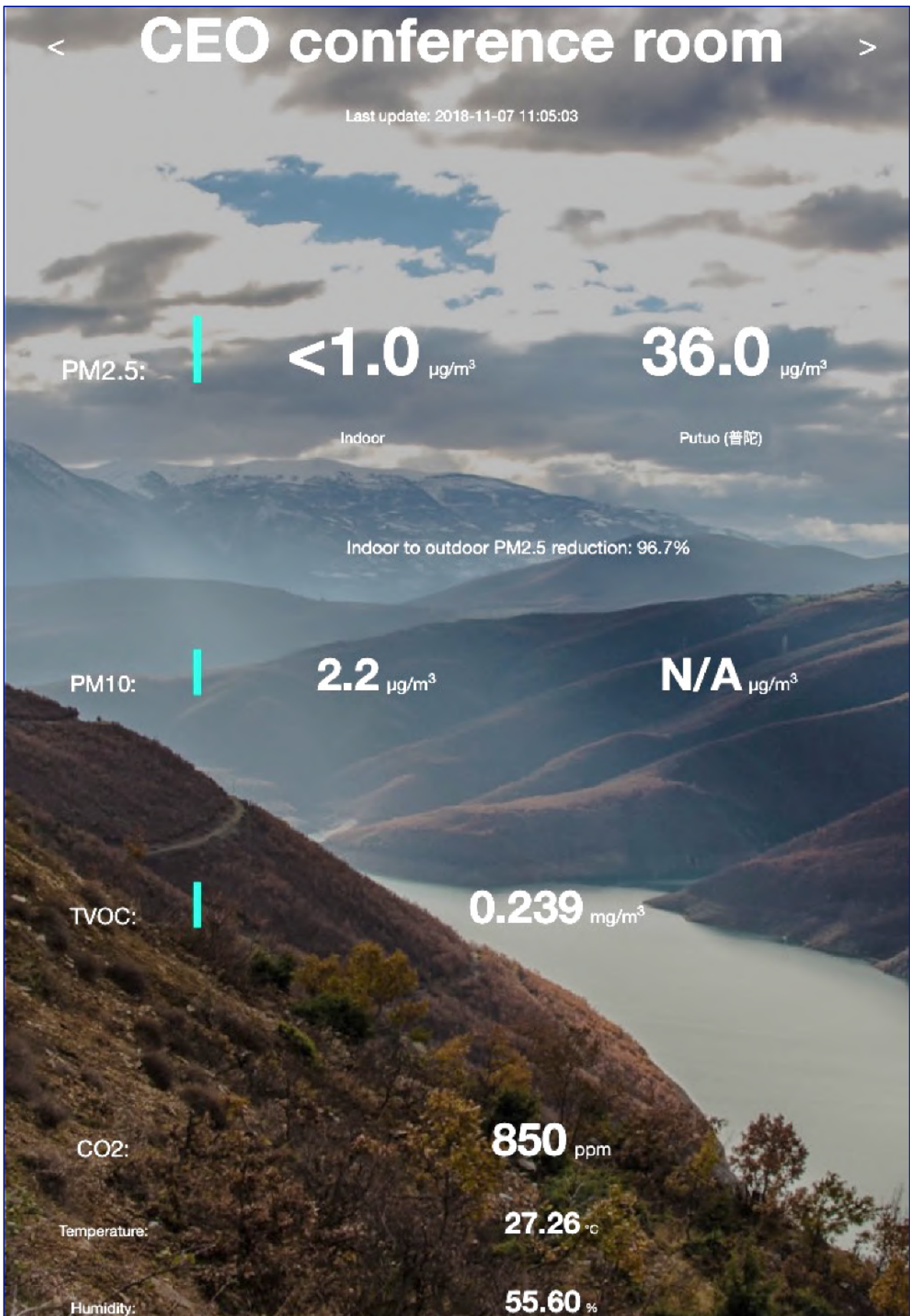
Monday	08:00 to 18:30
Tuesday	08:00 to 18:30
Wednesday	08:00 to 18:30
Thursday	08:00 to 18:30
Friday	08:00 to 18:30

The reduction factor represents the indoor to outdoor particulate matter ratio, this number tells you how much of the outdoor pollution was removed indoors.

The data coverage represents the percentage of the received data points in comparison with the maximum possible amount of data points during your defined opening hours. The higher the data coverage, the better. A low data coverage could hint to problems with the connectivity and/or electricity.



# AtmosAware WiFi Enabled Online Real-Time Data Display





Breathe crisp, clean, and visibly clearer  
“Mountain-Fresh” Indoor air again

## **CONTACT US:**

**ProMedUSA Pte Ltd**

116 Middle Road

#09-01E ICB Enterprise House

Singapore 188972

Tel: (65) 6836-9665 Fax: (65) 6836-6887

[atmosair@promedusa.us](mailto:atmosair@promedusa.us)

[www.pureair.sg](http://www.pureair.sg)